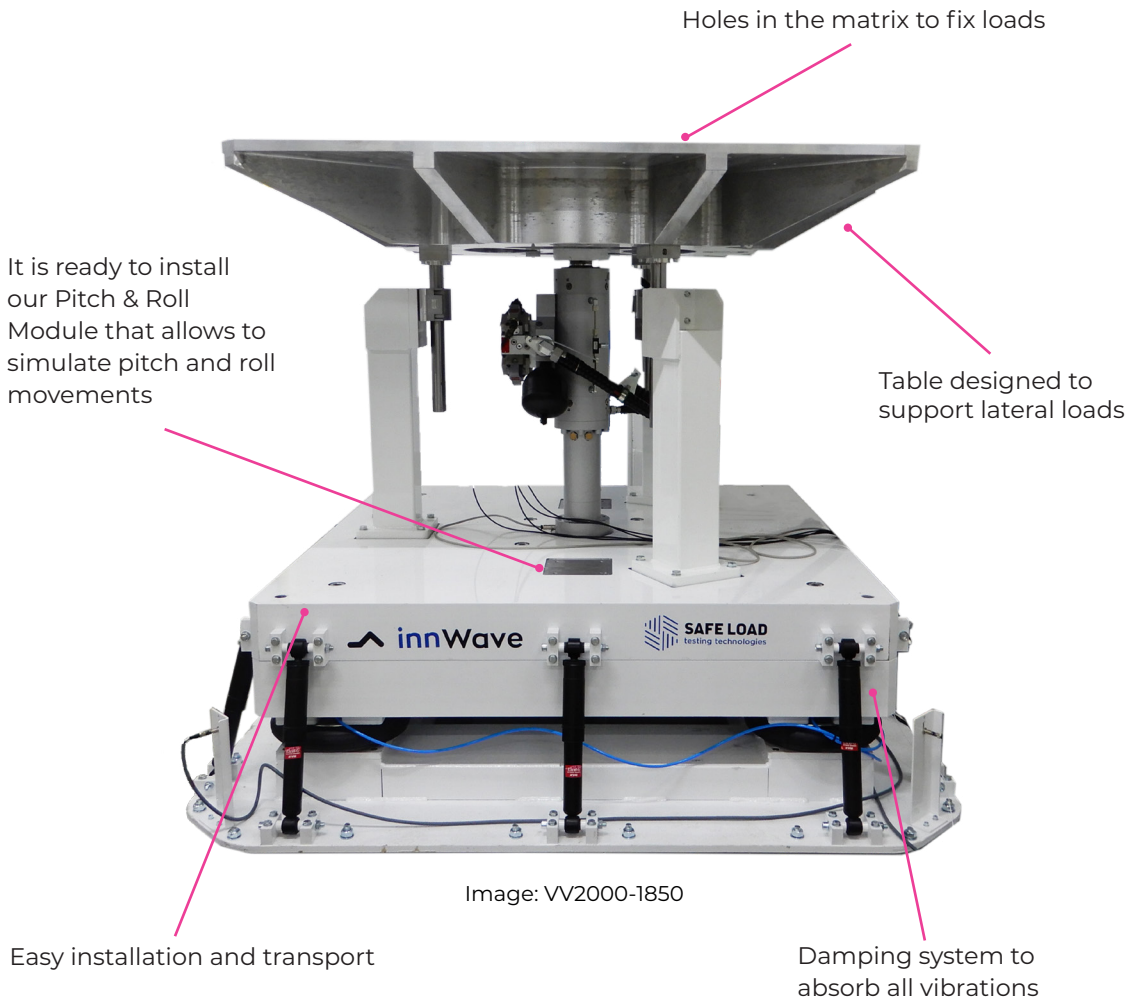




# innWave

The Vertical Vibration Machine is designed to perform the vertical vibrations produced by several means of handling and transportation.



## For all industries



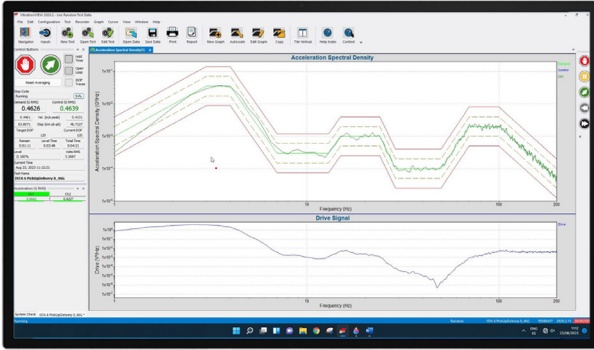


Image: Vibration Software Controller

## Optional accessories

- innWave** • Pitch & Roll Module
- innRecord** • Record and analyze vibrations

## Technical specifications

- Pneumatic and electric machine
- Foundation not required
- Vibration insulation: steel seismic mass
- Sine test Yes/Not
- Intuitive control software
- Can be installed inside a climatic chamber under demand

## Vibration Tests supported

- EN 15552
- ASTM D4169
- ISTA procedures 1A, B, C, D, E,G, H; 2A, B, C; 3A, B, E, F, H, K; 4 series; 6-FEDEX; 6-SAMSCLUB, 6-AMAZON.COM
- MIL-STD-167, MIL-STD-810

Model	Max. Load Weight		Table Size		Stroke		Frequency
	kg	lbs	mm	in	mm	in	SF   HF hz
VV150	150	330.6	825 x 825	32.5 x 32.5	70	2.7	300
			1250 x 1250	49.2 x 49.2			200 300
VV500	500	1102.3	1550 x 1550	61 x 61	70	2.7	200 300
			1850 x 1850	72.8 x 72.8			
VV750	750	1653.4	2500 x 1550	98.4 x 61	70	2.7	200 300
			1250 x 1250	49.2 x 49.2			
VV1000	1000	2204.6	1550 x 1550	61 x 61	70 150	2.7 5.9	200 300
			1850 x 1850	72.8 x 72.8			
VV1500	1500	3306.9	1550 x 1550	61 x 61	70 150	2.7 5.9	200 300
			2500 x 1550	98.4 x 61			
VV2000	2000	4409.2	1550 x 1550	61 x 61	70 150	2.7 5.9	200 300
			1850 x 1850	72.8 x 72.8			
VV3000	3000	6613.8	2500 x 1550	98.4 x 61	70 150	2.7 5.9	200 300

### Europe Headquarters

C/Velluters 1, nave 9,  
46980 Paterna - Valencia (Spain)

Office: +34 963929595  
Cell Phone: +34 689797409  
Email: [contact@safeloadtesting.com](mailto:contact@safeloadtesting.com)

[www.safeloadtesting.com](http://www.safeloadtesting.com)

### America Headquarters

120 NE 27TH STREET #900  
Miami, FL 33132 (USA)

Axel Amezcua: +1 (773) 543 0289  
Kevin McIntosh: +1 909-996-7442  
Email: [contact@safeloadtesting-usa.com](mailto:contact@safeloadtesting-usa.com)

[www.safeloadtesting-usa.com](http://www.safeloadtesting-usa.com)